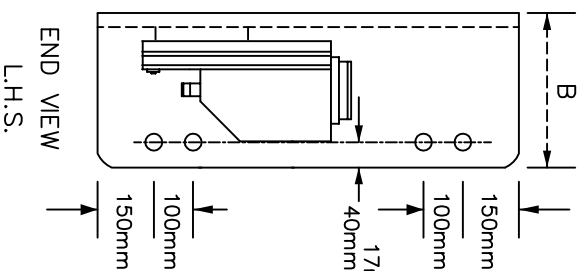
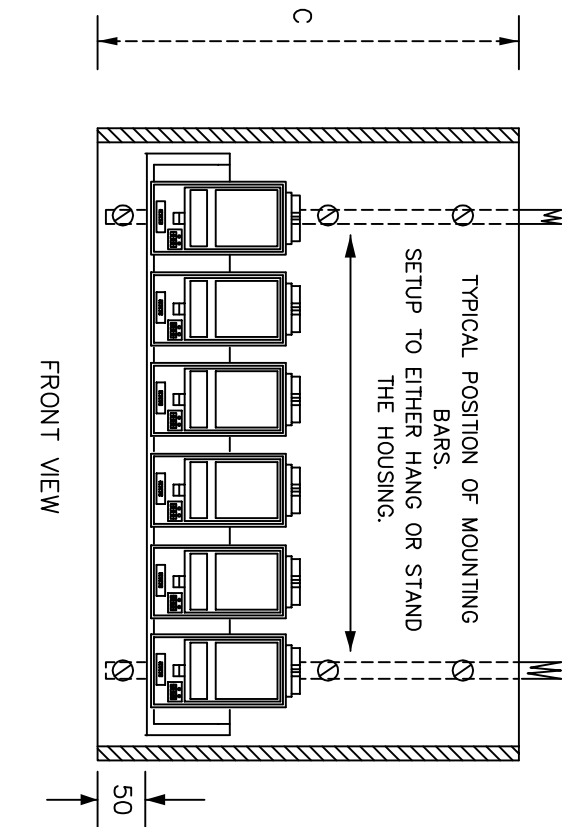
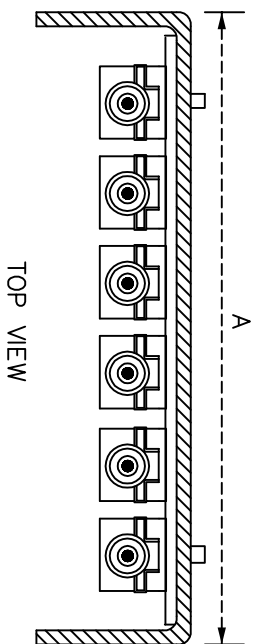
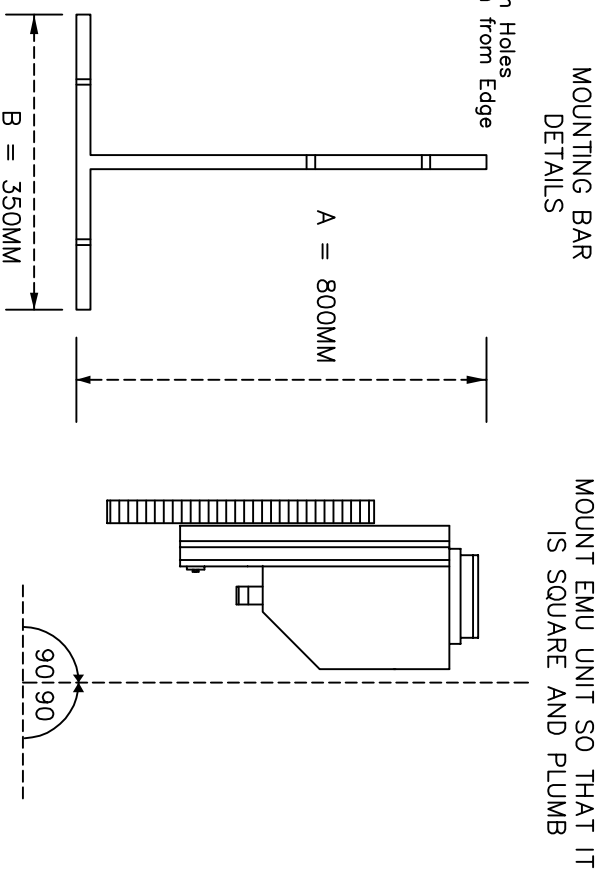


EMU SPIRIT MEASURE - PERSPEX HOUSINGS FOR HANGING OR STANDING



EMU SPIRIT MEASURE STAND DIMENSIONAL DATA			
MODEL SIZE	DIM A	DIM B	DIM C
3 WAY System	600	220	650
4 WAY System	700	220	650
5 WAY System	900	220	650
6 WAY System	900	220	650
7 WAY System	1040	220	650
8 WAY System	1200	220	650
9 WAY System	1300	220	650
10 WAY System	1400	220	650



- NOTES AND INSTALLATION TIPS**
- 1 PERSPEX HOUSINGS ARE TINTED GREY.
 - 2 MOUNT UNITS SO THAT THEY ARE SQUARE AND PLUMB.
 - 3 UNITS ARE PRE-WIRED, READY FOR MOUNTING.
 - 4 CLIP ON EMUS ONLY AFTER INSTALLATION OF THE HOUSING IS COMPLETE.
 - 5 NEVER ALLOW SHAVINGS OR SWarf FROM THE INSTALLATION TO ENTER THE TOP OF THE EMUS.
 - 6 TAKE CARE TO USE AT LEAST 3 ANCHOR POINTS FROM THE MOUNTING BARS.

7 Mounting Height of EMU's should be averaged out noting Bar Staff Height. (Normally the digital counter display's should be at eye level approx 165cm from ground level.)

Error Max Allowed +/- 1 Deg



INSTALLATION CAN BE ARRANGED

REVISION & DATE 1 General changes 2 Added Holes in Perspex For Various Locking Bars	Kas Mor'98 Kas Sep02	Bryring Pty Ltd T/A KRS Design 38 Hamilton Street, DAPTO, NSW Australia EMU SPIRIT MEASURE MOUNTING STANDS GENERAL ARRANGEMENT DETAILS	Telephone 02 42622572 Fax 02 42621212 CHECKED DATE APPROVED FEB 97 DRAWN KAS	SHT No 0 REV No 1
---	-------------------------	---	--	----------------------------

A3 0 1 2 3 4 5 6 7 8 9

A B C D E F G H J K L M N P Q R S T U V W X Y Z