



EMU POURER

To install your EMU's simply remove them from the packaging and firstly inspect for any transit damage. If Damage has resulted notify your distributor immediately with invoice details and Courier information.

- 1) Take note of the serial numbers of the units and inspect the top inside of the tank reservoir for any packaging material or foreign objects.
- 2) Clip on the EMU on to the bracket using a 30 Deg angle over the top power pins and then click down the EMU on to the bottom retaining clip gently.
- 3) Place bottle holder into neck of bottle (bottle seals must be moistened before each use).
- 4) Invert bottle and gently place into top of EMU reservoir.
- 5) Note counter reading on counter for record. (If Nip Counter Reset is in use, Zero the counter by turning the key Clockwise for 2 seconds and then return Key position to normal.)
- 6) The RED light should be OFF and the GREEN light should be ON. This indicates that the unit is ready to pour.
- 7) Depress the glass gently against the button to operate the unit. The Button only needs to be pressed and the EMU will pour the correct measure. The GREEN Light will flash whilst the EMU is pouring.
- 8) DO NOT PRESS THE BUTTON TOO HARD OR HOLD THE GLASS AGAINST THE BUTTON

WHEN THE UNIT IS POURING. ONCE A POUR IS INITIATED THE EMU WILL POUR THE CORRECT NIP. THE GLASS CAN BE MOVED AWAY FROM THE BUTTON WHILST THE EMU IS POURING.

- 9) ALWAYS ACTUATE THE BUTTON AT RIGHT ANGLES TO THE FRONT OF THE EMU.

ROUTINE SERVICE REQUIREMENTS

or go to <http://www.krs-design.com/> for further information.

SEE ENCLOSED CLEANING INSTRUCTIONS

If any EMU fails to operate correctly after carrying out the cleaning and maintenance, please return the faulty unit directly to the address below freight pre-paid. We will inspect the unit and repair under the unit under our 2 Year warranty plan provided the warranty conditions are met as included in the EMU Carton. We reserve the right to deny any claim if the unit has been tampered with or damaged by the user, or not routinely cleaned as per the enclosed instructions.

Proudly Designed and Manufactured by
KRS Design Australia

38 Hamilton Street

DAPTO NSW 2500

Ph 02 42622572

Fax 02 42621212

E-mail sales@krs-design.com

Web www.krs-design.com

emu is a registered trade mark

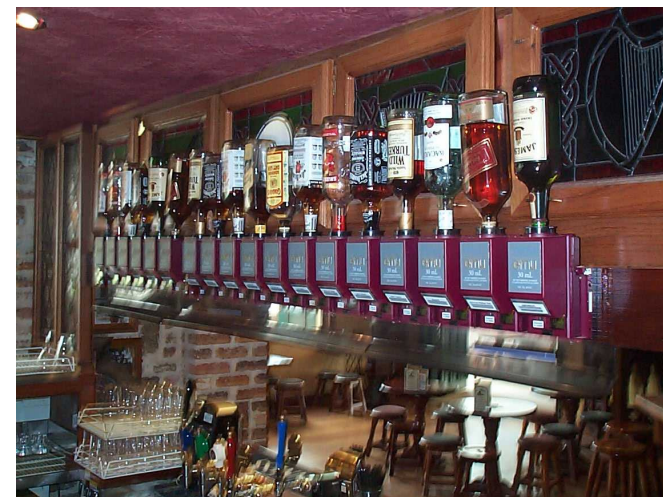
File = EMU Installation 02.doc

emu

SPIRIT MEASURE

SERVICE AND INSTALLATION

Future Solutions Now



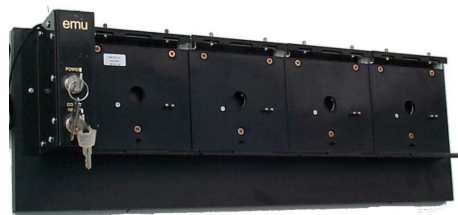
INTRODUCTION

Thankyou for purchasing this state of the art Australian made Spirit Measure. If you follow the instructions below on installation and servicing requirements, you will get many years of reliable service from your EMU's.

NECESSARY EQUIPMENT

EMU POWER SUPPLY

The EMU transformer is required to power your EMU's . There are two transformers available, one with a Power Key Switch and the other without. The Transformer can power up to 12 EMU's. Wire the 24V AC wiring to the EMU Bracket using the screw terminals provided. If Using the Counter Reset Box or the Computer Interface Box Consult the Separate Instructions supplied with those Units. Plug in the transformer to a 240V Outlet and place the transformer in a suitable position under the bar or above the bar if required. The transformer power supply unit must have adequate air flow and be kept dry.



The EMU Bracket can be purchased in varying lengths to suit the requirements of the bar. To install the bracket follow the instructions below :-

- 1) The modular bracket is usually supplied on a backboard. If you are supplying your own backboard, press the modular pieces together and then mount on a board 16 to 20mm thick using the screw holes provided. Never force the modules together as they should plug together easily.
- 2) After the modules are mounted on the backboard screw the units to the desired position. Mounting the bracket square and plum. A $\pm 1^\circ$ is allowable.
- 3) When mounting bracket on to pine board make sure bracket is mounted flat.
- 4) Mount complete unit to wall via the backboard using fixing screws suitable for the type of wall.
- 5) Always Mount the bracket so that staff can easily reach the Units to change the bottles and be able to operate the EMU correctly. Typically the height of the EMU's Nip Counter Display should be of eye level.

- 6) The glass should be brought up to actuate the rubber button at right angles to the front of the Measure and not interfere with the spout.
- 7) Allow 450mm above the top of the EMU for ease of installing and removing bottles.



BOTTLE HOLDER

The Bottle Holder is supplied with the EMU and is installed in the top of the bottle of spirits. Some 2 Litre Bottles have a larger throat which requires the optional larger cork to be fitted to the bottle holder. Always moisten the rubber cork so that insertion into the EMU reservoir is made easily.

Never force the bottle into the reservoir.

Consumable spares such as springs, corks and 'O' Rings are always available. Contact your supplier for spares.